

THIS DOCUMENT CONTAINS PROPRIETARY DATA OF POLARIS INDUSTRIAL ENTERPRISES, INC. NO DISCLOSURE, REPRODUCTION, OR USE OF ANY PART THERE OF MAY BE MADE EXCEPT BY WRITTEN PERMISSION.

REV.	BY	DATE	P/N
L	BT	7-24-0	LCPL

SPECIFICATIONS

ELECTRICAL

RESISTANCE RANGE --- SEE TABLE
 RESISTANCE TOLERANCE --- ±20%
 OUTPUT SMOOTHNESS --- BELOW 0.1% OF INPUT VOLTS
 CONTACT RESIS. VARIATION --- BELOW 2%
 INSULATION RESISTANCE --- 1000 MEGOHMS @ 500VDC
 DIELECTRIC STRENGTH --- 1 MINUTE AT 500 VAC
 RESOLUTION --- ESSENTIALLY INFINITE
MECHANICAL
 ROTATIONAL LIFE --- 10,000,000 STROKES

ENVIRONMENTAL

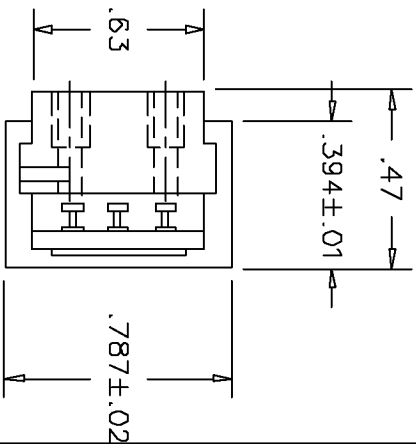
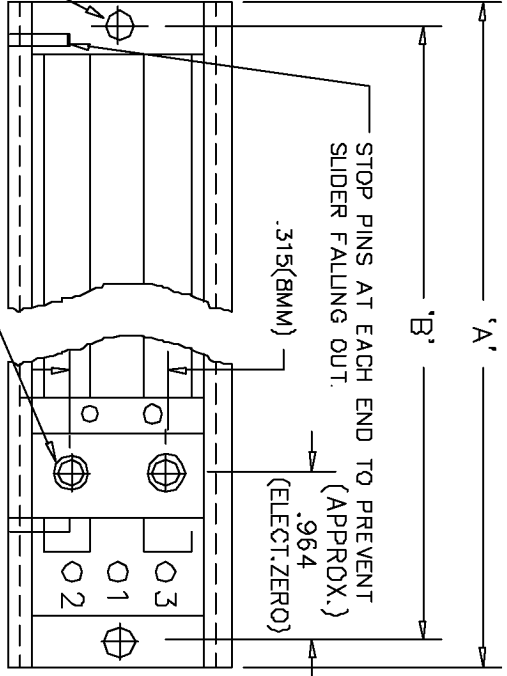
OPERATING TEMPERATURE --- -30°C TO +105°C
 TEMPERATURE COEFFICIENT --- ±400 PPM/°C
 VIBRATION --- 10HZ TO 2000HZ 15G
 SHOCK --- 50G 11MS
 MOISTURE RESISTANCE --- 40°C 95%RH 120 HOURS

MATERIALS

HOUSING --- ALUMINUM
 TERMINALS --- GOLD PLATED, BRASS
 RESISTANCE ELEMENT --- CONDUCTIVE PLASTIC

3/32 DIA. 2 PLCS. MOUNTING HOLES.

MOVEABLE CONTACT WITH #2-56 UNC-2B 5/32 DEEP THREADED HOLES, 2PLS.

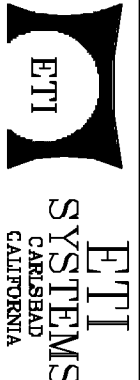


MODEL NO.	LCPL115	LCPL153	LCPL200	LCPL275	LCPL300	LCPL400	LCPL458	LCPL500	LCPL533	LCPL610	LCPL1000	LCPL1220
ELECTRICAL STROKE	4.52 ±.04	6.50±.04	7.874 ±.04	10.826 ±.04	11.811 ±.04	13.748 ±.04	18.000±.04	19.685 ±.04	21.000 ±.04	24.090±.04	39.370 ±.04	48.000 ±.04
MECHANICAL STROKE (APPROX.)	4.646 ±.04	6.126 ±.04	8.000 ±.04	10.952 ±.04	11.929 ±.04	13.865 ±.04	18.118±.04	19.803 ±.04	21.197 ±.04	24.197±0.4	39.567 ±.04	48.197 ±.04
STANDARD RESISTANCE VALUES	1K, 2K, 5K, 10K	1K, 2K, 5K, 10K	2K, 5K, 10K	2K, 5K, 10K	5K, 10K, 20K	5K, 10K, 20K 50K, 100K	5K, 10K, 20K 50K, 100K	5K, 10K, 20K 50K, 100K, 200K	5K, 10K, 20K 50K, 100K, 200K	5K, 10K, 20K 50K, 100K, 200K	10K, 20K, 50K 100K, 200K, 500K	10K, 20K, 50K 100K, 200K, 500K
LINEARITY (INDEPENDENT)	±0.5%	±0.5%	±0.5%	±0.5%	±0.5%	±0.5%	±0.5%	±0.5%	±0.5%	±0.5%	±0.5%	±0.5%
POWER RATING	1 WATTS	1 WATTS	2 WATTS	2 WATTS	2.5 WATTS	3 WATTS	3 WATTS	4 WATTS	4 WATTS	4 WATTS	6 WATTS	6 WATTS
DIMENSION	A ±.04 B ±.02	6.49 7.60	9.843 9.450	12.796 12.403	13.780 13.386	17.716 17.323	19.869 19.575	21.654 21.260	22.969 22.575	25.869 25.675	41.338 40.944	50.166 49.772

TOLERANCES

XX = +/- .010" FRACT. = +/- 1/84"
 XXX = +/- .005" ANGLES = +/- 1/2°
 ALL SPECIFICATIONS SUBJECT TO CHANGE WITHOUT NOTICE.

SCALE	DATE: 8-10-86	
	BY	BT
NONE	APPRVD	BT
CODE	IDENT:	19477



OPEN FRAME
 LINEAR MOTION
 POTENTIOMETER

PART NO.
LCPL

Mouser Electronics

Authorized Distributor

Click to View Pricing, Inventory, Delivery & Lifecycle Information:

[ETI Systems:](#)

[LCPL300-10K](#) [LCPL300-5K](#)