

THIS DOCUMENT CONTAINS PROPRIETARY DATA OF POLARIS INDUSTRIAL ENTERPRISES, INC. NO DISCLOSURE, REPRODUCTION, OR USE OF ANY PART THERE OF MAY BE MADE EXCEPT BY WRITTEN PERMISSION.

REV.	BY	DATE	APPRVL.	REV. NOTE:	P/N
M	BT	03/27/00		ADDED NOTE:	LCP12

SPECIFICATIONS

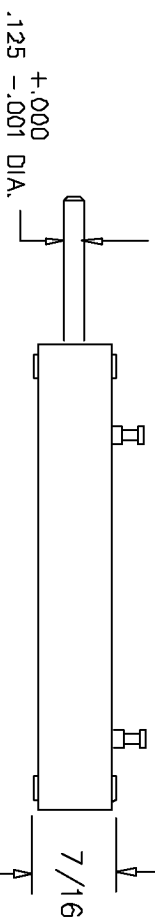
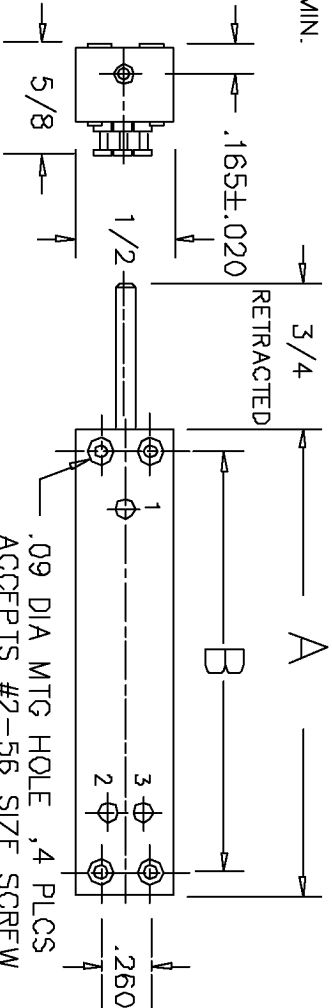
RESOLUTION ----- INFINITE
 OUTPUT SMOOTHNESS ----- LESS THAN 0.1% INPUT VOLTAGE
 CONTACT RESIST. VARIATION ----- LESS THAN 2%
 DIELECTRIC STRENGTH ----- 500 VAC MIN.
 INSULATION RESISTANCE ----- 1000 MEGOHMS AT 500 VDC MIN.
 FRICTION ----- 1.8 oz. (3.6 oz FOR LCP12-100)
 STOP STRENGTH ----- 20 OZ. MIN.
 RESISTANCE TEMPCO ----- ±400 PPM/°C
 WEIGHT ----- 10 TO 35 GRAMS
 LIFE EXPECTANCY ----- 20 MILLION STROKES

MATERIALS

BODY ----- ALUMINUM(BLACK ANODIZE)
 LID ----- HIGH TEMP. PLASTIC
 SHAFT ----- STAINLESS STEEL
 TERMINALS ----- BRASS GOLD PLATED
 RESISTANCE ELEMENT ----- CONDUCTIVE PLASTIC

OPTIONS AVAILABLE

SPECIAL ENDED SHAFTS
 SPECIAL RESISTANCE VALUES
 SPECIAL LINEARITY
 NON STANDARD STROKES
 SPRING RETURNS



MODEL NO'S.

SHAFT STYLES

LCP12P-(STROKE)-(RES.) (P) PLAIN

LCP12A - " " (A) #4-40 THREAD

LCP12B - " " (B) #5-40 THREAD

LCP12C - " " (C) CHAMFERED
0.030" DIA. X 45°

LCP12S - " " (S) SPRING RETURN

LCP12S-76 OR -100 (RES) RETRACTED LENGTH OF SHAFT TO BE
 1 1/4" FOR 3" & 4" STROKE SPRING RETURN.
 NOTE: FOR SPRING RETURN WITH THREAD, SEE DWG. LCP12ST

MODEL NO.	LCP12-12	LCP12-25	LCP12-50	LCP12-76	LCP12-100
STD.RESIS. VALUES	500,1K,2K 5K,10K	500,1K,2K 5K,10K	500,1K,2K 5K,10K,20K	1K,2K,5K 10K,20K	1K,2K,5K 10K,20K
RESISTANCE TOL.	±20%	±20%	±20%	±20%	±20%
LINEARITY (IND.)	±1.5%	±1.0%	±0.7%	±0.5%	±0.5%
POWER RATING	0.2 WATT	0.4 WATT	0.7 WATT	1.2 WATT	1.2 WATT
STROKE MECH+1-.0	1/2"	1"	2"	3"	4"
STROKE ELECT ±.02	1.50	2.00	3.00	4.00	5.00
"A" DIM ±0.04	1.50	2.00	3.00	4.00	5.00
"B" DIM ±0.02	1.26	1.77	2.75	3.76	4.76

TOLERANCES

XX = +/- .010" FRACT. = +/- 1/64"
 XXX = +/- .005" ANGLES = +/- 1/2"
 ALL SPECIFICATIONS SUBJECT TO CHANGE WITHOUT NOTICE.

SCALE	DATE: 3-29-86
NONE	BY
CODE	APPRV'D
IDENT: 19477	BT



ETI SYSTEMS
 CARLSBAD
 CALIFORNIA

TITLE
 LINEAR MOTION
 POTENTIOMETER

PART NO.
 LCP12

Mouser Electronics

Authorized Distributor

Click to View Pricing, Inventory, Delivery & Lifecycle Information:

ETI Systems:

[LCP12S-100-2K](#) [LCP12Y-12-5K](#) [LCP12Y-12-10K](#) [LCP12Y-25-5K](#) [LCP12Y-25-10K](#) [LCP12Y-50-5K](#) [LCP12Y-50-10K](#)
[LCP12Y-100-5K](#) [LCP12Y-100-10K](#) [LCP12ST-50-1K](#)